

# EnDDaT

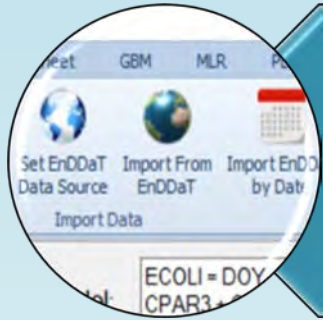
## *Environmental Data Discovery and Transformation*



great lakes  
observing system



EnDDaT?



VB & EnDDaT



Making a prediction

# What is EnDDaT?

*Environmental Data Discovery and Transformation*

online tool used to collect and process the data,  
and perform basic transformations.



Environment and  
Climate Change Canada

# Environmental Data Discovery and Transformation - BETA

Specify Project AOI



Choose Data



Process Data



Help



Specify Project Location by Point and Radius

Click on the map to create a marker. Drag the marker to move it. You can also type in the fields below. Enter a radius and click Choose Data on the left when ready.

Latitude

Longitude

Use my location

Radius (mi)

Upload a zipped shapefile to display on the map.

 Select shapefile to display...



Specify Project AOI



Choose Data



Process Data



Data Sources



Help



## How do you want to describe your area of interest?

Data discovery can be done through a bounding box or a site location and radius. Each option includes the option to upload a zip



Specify Project AOI



Choose Data



Process Data



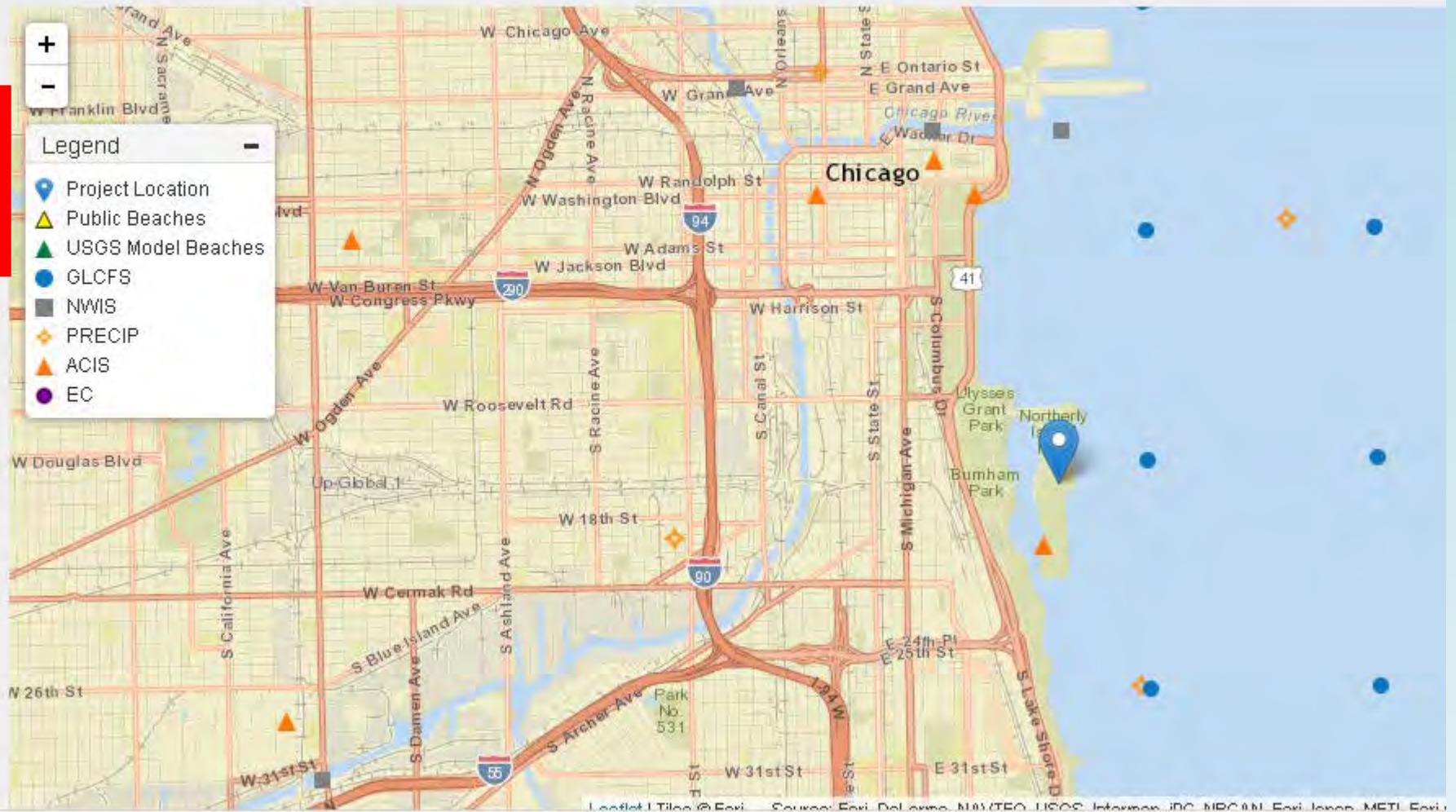
Data Sources



Help



Successfully fetched data of type(s): NWIS, PRECIP, ACIS, GLCFS at location 41.86056359481564 -87.6079845428467, radius 5 mi and



Specify Project AOI



Choose Data



Process Data



Data Sources



Help



Selected Variables

Process Data

Time Series Processing Options

Enter time base for statistical calculations in hours. For example, enter 12,24 in "Mean" to get a 12 hour and 24 hour running mean from a given variable.

**Mean! Max! Sum! Std Dev!**

Dataset	Variable	Raw	Mean	Min	Max	Sum	Diff	Max Diff	St Dev
GRID	Air Temperature (Celsius): [16,14]	<input checked="" type="checkbox"/>	<input type="text"/>	<input type="text"/>	<input type="text"/>	<input type="text"/>	<input type="text"/>	<input type="text"/>	<input type="text"/>
GRID	Cloud Cover (fraction): [16,14]	<input checked="" type="checkbox"/>	<input type="text"/>	<input type="text"/>	<input type="text"/>	<input type="text"/>	<input type="text"/>	<input type="text"/>	<input type="text"/>
GRID	Sea Water Temperature (Celsius): [16,14]	<input checked="" type="checkbox"/>	<input type="text"/>	<input type="text"/>	<input type="text"/>	<input type="text"/>	<input type="text"/>	<input type="text"/>	<input type="text"/>

Data Processing Filters

Output Date Range

Start: 2017-01-23  End: 2017-02-23

Or

Time Filters



Select file containing times to filter the output

Filter File Id

**Start:**  

**End:**  

Or

**Filter File Id**

### Output File Configuration

**Output Date Format**

**Output Time Zone**

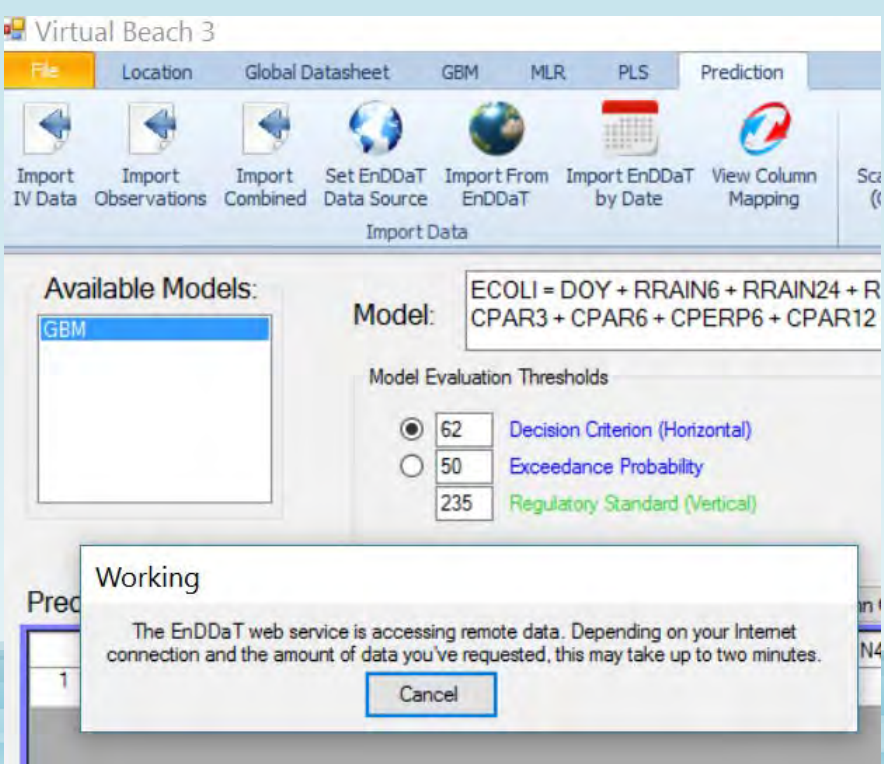
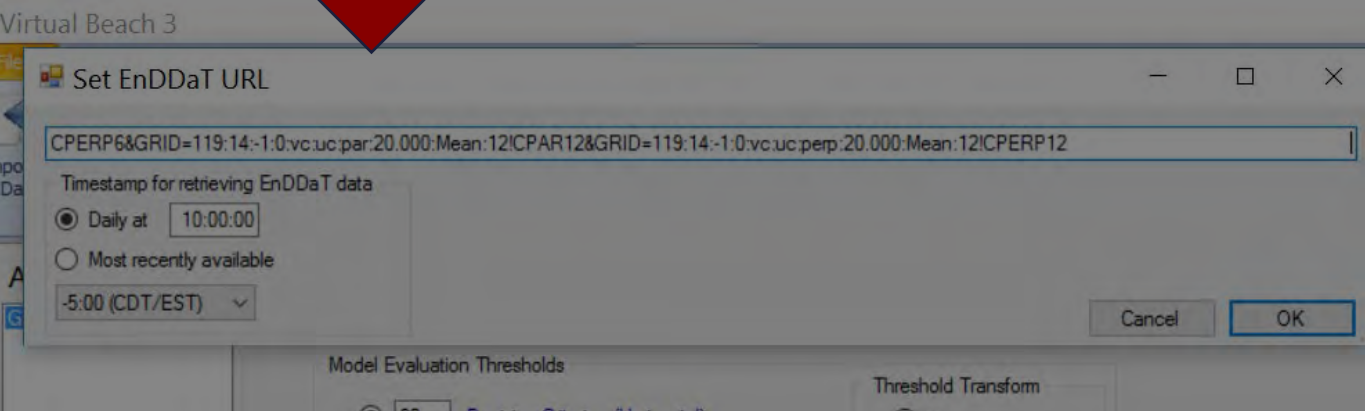
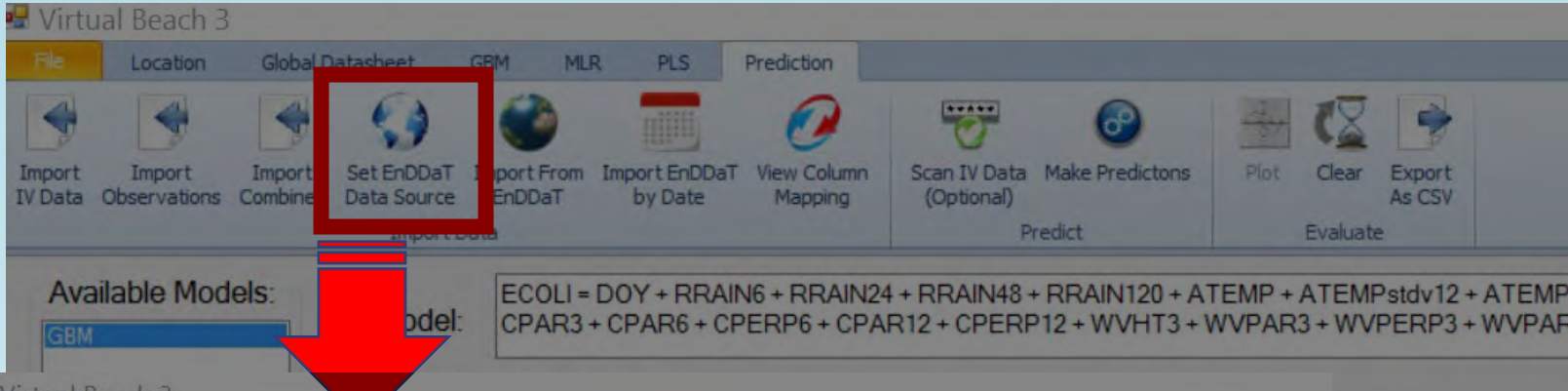
**Output File Format**

**Missing Value**

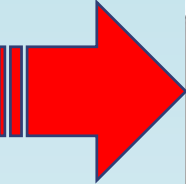
[https://cda.usgs.gov/ndat/service/execute?style=tab&DateFormat=Excel&TZ=0\\_GMT&fill=&beginPosition=2017-01-23&endPosition=2017-02-23&Lake=michigan&GRID=14%3A16%3A-1%3A1%3Aat%3A%3A%3A0!Air%20Temperature%20\(Celsius\)%3A%20%5B16%2C14%5D&GRID=14%3A16%3A-1%3A1%3Acl%3A%3A%3A0!Cloud%20Cover%20\(fraction\)%3A%20%5B16%2C14%5D&GRID=14%3A16%3A0%3A2%3Atemp%3A%3A%3A0!Sea%20Water%20Temperature%20\(Celsius\)%3A%20%5B16%2C14%5D](https://cda.usgs.gov/ndat/service/execute?style=tab&DateFormat=Excel&TZ=0_GMT&fill=&beginPosition=2017-01-23&endPosition=2017-02-23&Lake=michigan&GRID=14%3A16%3A-1%3A1%3Aat%3A%3A%3A0!Air%20Temperature%20(Celsius)%3A%20%5B16%2C14%5D&GRID=14%3A16%3A-1%3A1%3Acl%3A%3A%3A0!Cloud%20Cover%20(fraction)%3A%20%5B16%2C14%5D&GRID=14%3A16%3A0%3A2%3Atemp%3A%3A%3A0!Sea%20Water%20Temperature%20(Celsius)%3A%20%5B16%2C14%5D)



# EnDDaT and Virtual Beach...



+ CLDCV6 + CLDCV12 + CLDCV24 + WTEMP + WTEMPstdv12 + WTEMPstdv24 +  
2 + LAKELEV + TRIBmin48 + TRIB168 + TRIB336 + WindA\_comp



ID	Model_Prediction	Decision_Criteria	Exceedance_Probability	Regulatory_Status
07/05/2013 08:30	1.506	1.763	27.59	2.71
07/11/2013 04:30	1.428	1.763	21.86	2.71
08/07/2013 10:30	2.173	1.763	82.82	2.71
08/17/2013 02:21	1.645	1.763	39.24	2.71

- Prediction in minutes
- Real-time results
- No field data needed



# Let's check it out!

- <https://cida.usgs.gov/enddat/>